

AQUAPRO

CREATE A BIT OF BRILLIANCE IN YOUR OWN BACKYARD

ALL IN ONE SERIES PUMP, FILTER & UV CLARIFIER

- INSTRUCTIONS -



MODEL
03AS310
03AS311
DATE
MAY 2022 v2.0

HOTLINE 1300 278 283 PHONE +61 (8) 6260 1000
EMAIL SALES@AQUAPROONLINE.COM.AU

WWW.AQUAPROONLINE.COM.AU



AQUAPRO

CONGRATULATIONS ON YOUR PURCHASE
OF THIS PRODUCT BY **AQUAPRO**.

TECHNICAL SPECIFICATIONS

DESCRIPTION	ALL IN ONE 1000	ALL IN ONE 2000
TRANSFORMER	240V / 12V	240V / 12V
POWER CONSUMPTION*	24W	72W
UV-CLARIFIER POWER	5W	9W
MAX HEAD	1.6M	2M
WATER FLOW	1000 L/H	2000 L/H
IP RATING TRANSFORMER	IP65	IP65
IP RATING PUMP & UVC	IPX8	IPX8
OUTLET THREAD SIZE	1/2IN (MALE)	1/2IN (MALE)

* SUBJECT TO VARIATION ACCORDING TO LOAD.

Please read these instructions and familiarise yourself with the equipment before placing it in service. Correct and safe use of the system requires strict compliance with the safety instructions. For safety reasons persons less than 16 years of age or people that are not familiar with these instructions should not use this equipment.

BENEFITS

THE AQUAPRO ALL IN ONE SERIES COMPLETE POND AND FILTER SYSTEM IS DESIGNED TO CLEAN POND AND WATER FEATURE WATER UTILISING THE LATEST ADVANCED TECHNOLOGY.

- Mechanical & Biological Filtration
- 5W/9W Ultraviolet Clarifier for green water clarification.
- Powerful 1000/2000 L/hour pump with wear resistant ceramic components
- Dual Flow Control T-Piece
- Multiple fountain nozzles help aeration of water
- 12V Low Voltage Power System for safe in-pond operation.

PRODUCT SPECIFIC SAFEGUARDS

- Do not look at an unshielded UV-C globe. Ultra Violet light is harmful to your eyes and may cause blindness. Do not operate UV Globe out of the housing.
- As the UV Clarifier Globe is made of quartz glass, please avoid sudden jolts, as this will break the quartz.
- In cold temperatures where frost or freezing may occur, please cease to use the unit. Remove from the environment. Frozen water will crack the Quartz glass sleeve.

ALL-IN-ONE SERIES

INSTRUCTIONS

IMPORTANT SAFEGUARDS

To guard against injury, basic safety precautions should be observed including, but not limited to the following:

- The pump should only be used in clean water. Do not use the pump in any solvent or gasoline that is flammable.
- Any damage of the equipment or unmerited operation will bring dangerous UV Rays to the skin and eyes. If there is any damage to the equipment, it must not be used. The equipment should be placed out of reach of children.
- For your own safety, disconnect from the power supply before any maintenance of any equipment is attempted on the tank or water body.
- Be sure the equipment is submerged completely in the water. The depth should not exceed 2m.
- Do not operate the pump if the appliance or any components of the system, such as the power cable, have been damaged.
- Always use a properly grounded power supply that is connected to an RCD with a rated residual operating current not exceeding 30mA. As per AS/NZS 3350.2.41:1997
- The drip loop method should be used to prevent water from traveling down the cable and onto the plug or power supply. If the plug does get wet, do not unplug the cable. Disconnect the circuit breaker that supplies power to the power supply point. Then unplug and examine the plug and power supply point for presence of water. If the power point has become wet, you should consult an electrician before using the power point again.
- Always unplug the pump from the power supply when not in use or before performing any maintenance on the pump or in the pond. Never pull the cable to disconnect the plug from the power supply. Grasp the plug and pull to disconnect.
- If required, have a qualified electrician install a weatherproof power supply point near to the pond or water-feature (within the cable length of the appliance).
- Do not install or store the appliance where it will be exposed to extreme hot or cold temperatures. Do not use in water above 35°C.
- Do not cut the cable as this will result in voiding your warranty.
- Care should be taken to arrange the power cable so that it cannot be accidentally tripped over or pulled.
- Do not attempt to repair the electrical appliance yourself. Return to an authorised service centre or place of purchase if a fault occurs, regular maintenance is not considered repair and is required by user.

INSTALLATION

Once a fountain nozzle has been selected, assemble the fountain kit as per the attached diagram. Screw the T-piece onto the pump outlet, adjust the telescopic riser to the desired height and align vertically. On the Dual-control flow adjuster, on the T-piece, you can vary the flow between the fountain head and the waterfall outlet. Close the second outlet of the T-piece if this is not required for an optional waterfall.

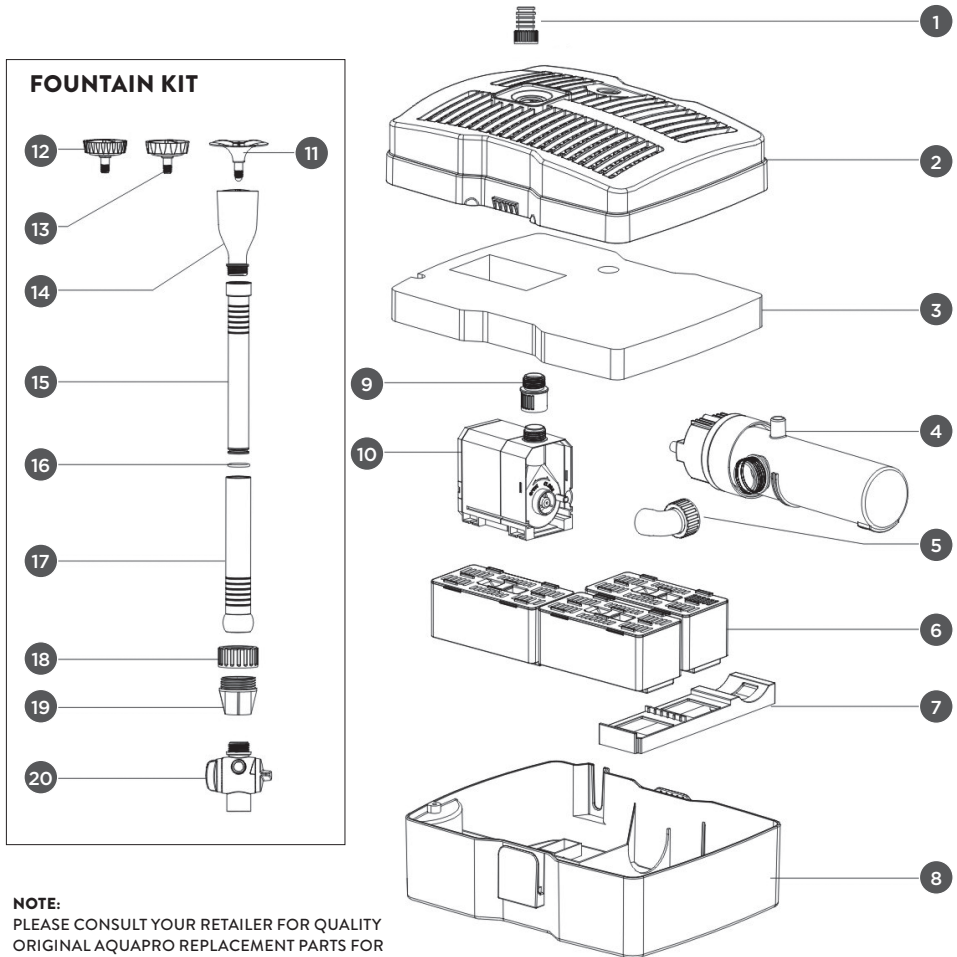
Position the device in the pond horizontally, on a solid base free from sludge, in such a way that it is fully covered with water and the fountain kit protruding out of the water.

Insert the two pin Low Voltage plug into the Low Voltage side of the transformer and secure with the locking nut. Insert the mains power supply plug into the power outlet.

Note: Use the power supply switch for turning the unit on and off.

AQUAPRO

PARTS DESCRIPTION (FIG.1)



NOTE:
PLEASE CONSULT YOUR RETAILER FOR QUALITY ORIGINAL AQUAPRO REPLACEMENT PARTS FOR YOUR AQUAPRO PRODUCT.

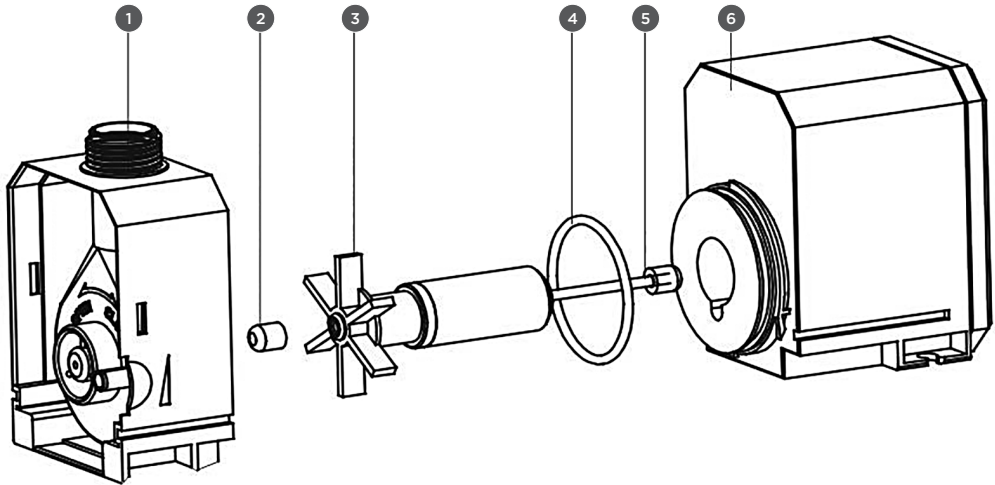
VISIT WWW.AQUAPROONLINE.COM.AU FOR NEAREST STOCKISTS.

1. 20MM HOSE TAIL 2. FILTER COVER 3. BIO SPONGE 4. UV-CLARIFIER UNIT 5. PUMP SUCTION ELBOW 6. FILTER MEDIA BOXES 7. FILTER MEDIA MOUNTING PLATE 8. FILTER BASE WITH CLIPS 9. 1/2" PUMP THREADED ADAPTER 10. WATER PUMP 11. FOUNTAIN HEAD (BELL NOZZLE) 12. FOUNTAIN HEAD (COURSE DAISY NOZZLE) 13. FOUNTAIN HEAD (FINE DAISY NOZZLE) 14. FOUNTAIN NOZZLE MOUNT 15. INTERNAL EXPANDABLE RISER 16. O-RING 17. EXTERNAL EXPANDABLE RISER 18. BALL JOINT LOCKING NUT 19. RISER TO T-PIECE ADAPTER 20. DUAL CONTROL T-PIECE ADAPTER

ALL-IN-ONE SERIES INSTRUCTIONS

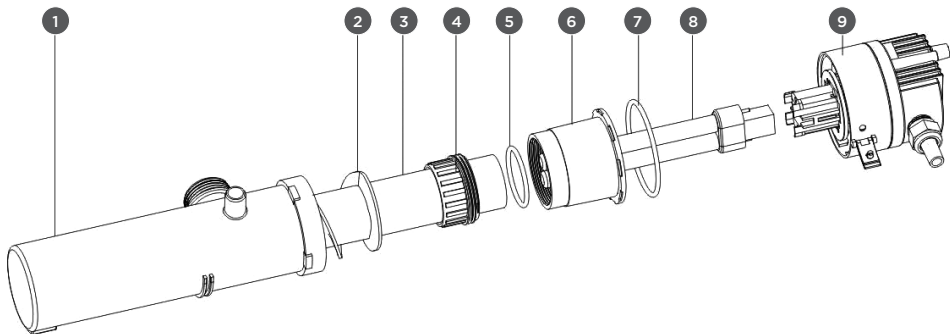
PUMP (FIG.2)

1. IMPELLOR COVER
2. RUBBER GROMMET
3. IMPELLOR
4. O-RING
5. CERAMIC IMPELLOR SHAFT
6. PUMP MOTOR BODY



UVC (FIG.3)

1. IUV LIGHT CASING
2. WATER FLOW SPIRAL
3. QUARTZ GLASS SLEEVE
4. QUARTZ SLEEVE LOCKING NUT
5. 45MM X 4MM O-RING
6. PLASTIC QUARTZ SLEEVE HOLDER
7. 60MM X 3.1MM O-RING
8. 9W LOW VOLTAGE UVC GLOBE
9. UVC LAMP HOLDER WITH CABLE



AQUAPRO

TROUBLESHOOTING

PROBLEM	REASON	SOLUTION
WATER PUMP NOT WORKING	NO POWER	CHECK THAT THE PLUG IS CONNECTED AND TURNED ON
	SPONGES AND FILTER MEDIA BLOCKED WITH SLUDGE	CLEAN THE SPONGES AND FILTERS
	IMPELLOR IS BLOCKED WITH SLUDGE OR LIMESCALE	CLEAN THE IMPELLOR AS PER THE INSTRUCTIONS
	RUNNING WITHOUT SUFFICIENT WATER	SUBMERSE THE EQUIPMENT UNDERWATER THEN PLUG IN. REFILL IF NECESSARY.
WATER PUMP IS NOISY	BLOCKAGE IN PUMP	CLEAR THE BLOCKAGE
	IMPELLOR & SHAFT WORN OUT	REPLACE IMPELLOR & SHAFT
	IMPELLOR BROKEN	REPLACE IMPELLOR
	WATER VALVE CLOSED ON THE OUTLET	OPEN THE VALVE AND ALLOW WATER TO FLOW
UVC LAMP IS NOT WORKING	UNIT INLET IS BLOCKED OR THE WATER PUMP INLET IS BLOCKED	CLEAR ALL BLOCKAGES
	UVC GLOBE BLOWN OR QUARTZ SLEEVE BROKEN	REPLACE AS NECESSARY
	CONNECTION OF THE UVC GLOBE NOT SUFFICIENT	PUSH UV GLOBE IN FIRMLY UNTIL YOU HEAR A CLICK SOUND

SPARE PARTS (NOTE: THESE ARE THE MOST USED)

DESCRIPTION	MODEL 1000	MODEL 2000
IMPELLOR & SHAFT	11AQ110	11AQ111
LOW VOLTAGE UV GLOBE 5W / 9W	11AU972	11AU177
QUARTZ GLASS SLEEVE	11AQ210	11AQ211
SPONGE FILTER	11AQ310	11AQ311
COMPLETE FOUNTAIN KIT	11AQ410	11AQ411
12V TRANSFORMER 48VA / 72VA	O4ST048	O4ST072

ALL-IN-ONE SERIES

INSTRUCTIONS

PRODUCT SPECIFIC SAFEGUARDS

- The pump is designed to be used in a Fresh water Garden pond. It is not to be used in any other manner or purpose. The pump should only be used in clean water.
- AQUAPRO Filtration & Waterfall Pumps are cooled by water flowing through the inside of the motor body. If the pump flow becomes restricted it will overheat and could cause permanent damage. Large tubing size is strongly recommended to deliver adequate water flow to cool the pump. The pump needs to be cleaned regularly to prevent the pump becoming blocked, thus causing the pump to overheat and burn out. This is not a warrantable event. It is strongly recommended not to choose an appropriate sized pump that is too small for the Job required. The flow rate through the pump needs to be strong enough so that a half of the rated max flow is kept running at all times.

CLEANING

BEGIN BY ENSURING THAT THE MAINS POWER SUPPLY IS DISCONNECTED BEFORE ATTEMPTING ANY MAINTENANCE OR ADJUSTMENT OF THE UNIT. REMOVE THE UNIT FROM THE WATER. THE FILTERS AND SPONGES IN THIS UNIT WILL CLOG OVER TIME. TAKE OFF THE FOUNTAIN SET FIRST, AND THEN OPEN THE TWO CLIPS ON THE SIDE OF THE FILTER COVER.

- To remove cage, pull plastic tabs on both sides and lift the cage off.
- Take out the filter sponge and filter media boxes and clean. It is recommended this is done in a bucket of pond water to ensure good bacteria are not killed by the Chlorine in tap water. Check for wear and tear of the sponges. Replace if necessary.
- Maintain the filter sponge regularly according to how quickly the sponge gets clogged up. When the flow starts to get reduced check and clean if necessary.
- You can help boost the biological function of your filter with a bacterial additive available from your local stockist.
- The UV lamp should be replaced regularly at the end of its design life. Usually this around 11 months of use. To take out the UV clarifier globe, open the safety catch on the side and turn the UV Clarifier casing in anti-clockwise direction to the stop position. Then slide out the 5W/9W LV quartz glass globe. Now you can change your UV lamp.
- Dirt on the Quartz sleeve will influence the efficiencies of the equipment. Please remove and clean regularly.
- To clean the quartz glass sleeve, take the quartz sleeve out by unfastening the locking nut (No. 4 Fig. 3). Then you can take out the quartz glass sleeve and clean.
- To maintain the impellor of the pump, turn the Impellor cover in an anti-clockwise direction to the stop position, and then you can separate the impellor cover and pump body. Take out the impellor, clean it with clean water and suitable brush. Inspect for signs for wear. Replace if necessary.
- Once the cleaning and inspection process is completed, reassemble in the reverse manner. The pump suction elbow is pushed firmly onto the impellor cover inlet of the pump. Pay attention to the UV clarifier casing when inserting it back together.

WARRANTY

IMPORTANT: IF USED IN MARINE OR SALTWATER, DUE TO THE HARSH CONDITIONS THE WARRANTY IS VOID.

WARRANTY COVERS ONLY APPLIANCE DEFECTS, FAULTY MATERIAL AND WORKMANSHIP WITHIN A 2 YEAR PERIOD.

- Faults arising due to; accidents, misuse, not following manufacturer's guidelines/instructions, or power surges/spikes/brownouts will not be covered.
- The impellor set is a consumable item and is therefore not covered under warranty.
- Warranty will be void if any tampering, removal of warranty labels, or electrical circuitry is evident.
- Warranty will be void if the power cord is cut or damaged in any way.
- Warranty will be void if any visible signs of overheating are present.
- Loss of livestock, damage to property or personal injury caused by this product will not be covered.
- Warranty claims caused by installation faults will not be covered.
- It is the customer's responsibility to return the faulty appliance for any warranty claim to Aquatec.
- For any warranty to be valid, an original proof of purchase must be provided.
- Our goods come with guarantees that cannot be excluded under the Australian Consumer Law. You are entitled to a replacement or refund for a major failure and for compensation for any other reasonably foreseeable loss or damage. You are also entitled to have the goods repaired or replaced if the goods fail to be of acceptable quality and the failure does not amount to a major failure.

**FOR MORE INFORMATION AND THE COMPLETE AQUAPRO RANGE
VISIT WWW.AQUAPROONLINE.COM.AU**

HOTLINE 1300 278 283 PHONE +61 (8) 6260 1000

EMAIL SALES@AQUAPROONLINE.COM.AU

WWW.AQUAPROONLINE.COM.AU